

ELECTRICAL DIAGNOSTIC TESTING TOOLS

SPE Scan Tools	60-61
TPMS	62-64
EPB / EOBD	65
Emissions	66-67
Multimeters	68
Circuit & Electrical Testing	69
Battery Care	70
Booster Packs	71
General Diagnostic Testing Tools	72-73

KEY



DO NOT USE AIR TOOLS



FOR USE WITH PETROL ENGINES



FOR USE WITH DIESEL ENGINES

BELT

FOR USE WITH BELT DRIVEN ENGINES

CHAIN

FOR USE WITH CHAIN DRIVEN ENGINES

SPE - Automotive Electronic Service, Bodyshop & Diagnostic Tool

SPE is an advanced electronic handheld tool, which is available in 3 different versions - These are suitable and configured for Automotive Service Centres, Bodyshops and Professional Diagnostic Garages. All 3 versions of SPE are for use on modern vehicles equipped with an EOBD socket, which have a range of on-board Electronic Control Systems (ECU's) fitted for monitoring and controlling critical vehicle functionality.

SPE has its own battery, which is re-charged via a mains charger or when connected to a vehicle and when fully charged can give up to an hour of use as a stand-alone device.

Once SPE is switched on, simply select the vehicle to work on and SPE then offers a selection of vehicle specific options for the technician to select from – no confusion over what can and can't be done; the SPE even guides a technician to find the location of the EOBD socket!

- SPE guides a technician step by step through functions
- SPE makes decisions, a technician only selects the function they need
- SPE includes software for the vast majority of popular cars
- SPE includes latest vehicle coverage
- SPE creates printable reports for each process undertaken
- SPE includes an in-built training module, so a technician doesn't need to be sent away to be trained on the tool – SPE trains its own users

SPE is able to carry out a vast range of electronic functions on a modern vehicle, from everyday health checking to DPF regeneration, and even airbag and injector coding (dependant on SPE version). SPE allows safe working on key vehicle systems such as engine ECU's, with no ill effects to essential operations; as it can re-set or enable components and systems without risk of accidental alteration of key ECU settings (parameters).

Choose from the following models:

30650000 - SPE Service

Ideal for Service Centres / Tyre-Shops & Fast Fit Outlets

Work with ease on modern vehicles with electronically controlled service functions

30652500 - SPE Bodyshop

Ideal for use in modern self-sufficient Bodyshops

An invaluable aid to assessing accident damage & estimating the cost of repair to vehicle electronic systems. Allows adjustment / programming following Bodyshop Repair

30653500 - SPE Workshop

Ideal tool for use in Diagnostic specific workshops

SPE Workshop benefits from having all of the features found in both SPE Service and SPE Bodyshop – together in one high level platform that comes with extra features including DTC Scanning & Clearing, Engine component parameter adjustments & resetting, Injector and Fuel Component Coding and much more!

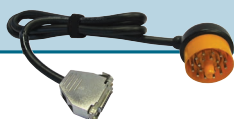
For full features of each model, please refer to table on page 61

Note: Service & Bodyshop versions can both be upgraded to full Workshop capability as and when required



BMW 20 pin Connector Cable 30650700

- 20 pin diagnostic connector for BMW models



Mercedes 38 pin Connector Cable 30650800

- 38 pin diagnostic connector for Mercedes models



Sprinter 14 pin Connector Cable 30650900

- 14 pin diagnostic connector for Mercedes Sprinter / VW Crafter models



Iveco Round 38 pin Connector Cable 30651000

- 38 pin diagnostic connector for Iveco models



SPE - Automotive Electronic Service, Bodyshop & Diagnostic Tool

Features	Model		
	30650000 SPE Service	30652500 SPE Bodyshop	30653500 SPE Workshop
ABS / ESP System	✓		✓
ABS / Traction / ESP Controls		✓	✓
Actuator Test (Fans, Mirrors, Windows, Lights, Valves, Pumps)		✓	✓
Airbag & ECU Enabling & Coding		✓	✓
Aircon & Climate Control System Controls		✓	✓
Aircon Systems	✓		✓
Battery & Charging System	✓		✓
Body Computer Controls		✓	✓
Brake & Clutch Bleeding	✓		✓
CAN Network Status		✓	✓
Central Locking & Immobilizer & Anti-Theft Control		✓	✓
Comfort Controls		✓	✓
Display Check & Reset		✓	✓
Doors / Lights / Seats / Mirror / Parking Controls		✓	✓
DTC Scanning & Clearing			✓
Electronic Park Brake & Pad Change	✓		✓
Engine Component Enabling & Testing			✓
Engine Component Parameter Adjustments & Resetting			✓
Engine Systems Check	✓		✓
FAP / DPF Filter Regeneration	✓		✓
Injector and Fuel Component Coding			✓
Key & Remote Control Coding		✓	✓
Lighting Systems	✓		✓
Maintenance & Technical Data	✓	✓	✓
Oil Degradation	✓		✓
Power & Electronic Steering Controls	✓		✓
Service Light & Service Module Reset	✓		✓
Steering & Suspension System		✓	✓
Suspension Controls	✓		✓
Transmission & Gearbox Controls		✓	✓
Transmission Component Enabling & Testing			✓
Tyres & TPMS Systems	✓		✓
Vehicle Delivery & Acceptance Report - Automatic	✓	✓	✓

**Rubber Cover
30651300**

- Heavy Duty rubber cover for SPE Handset


**Mains Power Supply Adaptor - UK Plug
30651100**

- 240v mains power supply (UK plug)
- Includes inter-changeable EU 2 pin adaptor


**Lithium Battery Pack
30651400**

- Long life lithium battery pack for extended use when not connected to a mains supply


SPE - Spare Parts

- 30650100 - Hardware Kit
- 30650200 - EOBD 16 Pin Connector Cable
- 30651500 - USB Key

SPE - Subscriptions

- 306512SUB - SPE Service Annual Subscription
- 306525SUB - SPE Bodyshop Annual Subscription
- 306535SUB - SPE Workshop Annual Subscription
- 306535UP - SPE - Subscription Upgrade - Upgrade from either SPE Service, or SPE Bodyshop, to full SPE Workshop software functionality

TPMS - Tyre Pressure Monitoring - Sensor Testing, Activation & Clone Valve Programming Tool 306610V2

Sensor Activation - Sensor Checking - Sensor Replacement - All in One Single Tool !

- Re-programmable Clone Valve Features:
 - Able to re-program "Clone" valves wirelessly without using a PC or docking station
 - Fully compliant for EU frequency valves using 433Mhz & not just USA valves on 315Mhz
 - Approved for use with Schrader & Alligator EU frequency re-programmable TPMS valves
 - Step by step guidance for valve cloning
 - Able to copy old valve ID or create new ones
 - Monthly updates to add extra coverage as valve makers add new vehicle applications
 - Sensor replacement procedures
- Built-in sensor checking – no exciter tool required
- Test feature allows for checking operation of sensors, and sensor batteries
- Includes OEM sensor part number for reference & OEM valve component references
- Sensor re-programming information
- Includes sensor replacement, technical and tyre rotation procedures
- Print test results / file test results & update the software / applications (via PC)
- Displays procedures for new sensors to be synchronised with vehicle TPMS ECU (pairing)



Schrader EZ Sensor



Alligator Sens-It Valve



Scan the QR Code to watch a video of the tool programming a Schrader Ez Sensor



Scan the QR Code to watch a video of the tool programming an Alligator Sens-It Valve

Spare Parts:

- 30661100 - AC Mains Power Adaptor
- 306610V2SUB - TPMS Tool Annual Subscription (Year 2 onwards)

TPMS PLUS - High Level Diagnostic TPMS Tool 306615V2

All the features of the standard TPMS Tool (306610V2 - above), PLUS the following additional features:

- Connects to TPMS ECU via EOBD diagnostic lead (Containing full multiplexing functionality)
- Sensor re-programming via the EOBD socket
- Sensor & TPMS ECU fault code reading / deletion
- Built-in sensor checking – no exciter tool required
- Test feature allows for checking operation of sensors, and sensor batteries
- Includes OEM sensor part number for reference & OEM valve component references
- Sensor re-programming information
- Includes sensor replacement, technical and tyre rotation procedures
- Print test results / file test results & update the software / applications (via PC)
- Displays procedures for new sensors to be synchronised with vehicle TPMS ECU (pairing)



Spare Parts:

- 30661100 - AC Mains Power Adaptor
- 30660200 - EOBD Cable
- 30660170 - SD Card Reader
- 30660270 - USB Cable (male to male)
- 306615V2SUB - TPMS PLUS Tool Annual Subscription (Year 2 onwards)

**TPMS Tool - Complete Kit
306612V2**

- **Contents:**
- TPMS Sensor Testing and Activation Tool (306610V2)
- Torque Tool Kit (80082000 - see page 64)

Supplied in Plastic Case with foam insert


**TPMS PLUS Tool - Complete Kit
306617V2**

- **Contents:**
- TPMS Plus Sensor Testing and Activation Tool (306615V2)
- Torque Tool Kit (80082000 - see page 64)

Supplied in Plastic Case with foam insert


**TPMS Tool - Complete Kit in Storage Box
306614V2**

- **Contents:**
- TPMS Sensor Testing and Activation Tool (306610V2)
- Torque Tool Kit (80082000 - see page 64)
- Storage Box


**TPMS PLUS Tool - Complete Kit in Storage Box
306619V2**

- **Contents:**
- TPMS Plus Sensor Testing and Activation Tool (306615V2)
- Torque Tool Kit (80082000 - see page 64)
- Storage Box


**TPMS Storage Box - Blue
306614BOX-B**

- Tool box with four plastic trays & adjustable storage compartments
- Ideal for storing TPMS parts & tools

Spare Parts:

- 30661600 - Replacement Drawer


**Torque Screwdriver 0.1 - 3.0Nm
80080100**

- Adjustable Torque Screwdriver with 1/4" sq drive
- Supplied with 5mm hex key for torque adjustment
- Scale graduated in 0.1Nm increments
- Precise tool ideal for critical torque settings as found on TPMS Valve Cores and on low torque TPMS valve nuts


**Torque Screwdriver 2.0 - 10.0Nm
80080200**

- Adjustable Torque Screwdriver with 1/4" sq drive
- Supplied with 5mm hex key for torque adjustment
- Scale graduated in 0.5Nm increments
- Includes 3/8" sq dr handle for easier application of torque
- Precise tool ideal for critical torque settings on most TPMS valve nuts
- Also ideal for fitting of many other automotive components where precise torque is recommended: e.g. Sensors, Plastic Trim, Dashboard Components, Glow Plugs etc



Scan the QR code to watch a video of the Torque Screwdriver in action

TPMS Comprehensive Torque Tool Kit

80082000

- Set of tools for the correct application of critical torque settings when working with TPMS systems on modern vehicles
- Contains all the appropriate tools for servicing and replacing TPMS Valve Cores and TPMS Valve Nuts
- Supplied in foam - Ideal for tool box drawer

Contents:

- Torque Screwdriver 0.1 - 3.0Nm
- Torque Screwdriver 2.0 - 10.0Nm
- 3/8" sq dr T-Bar Handle - for 80080200
- 1/4" Valve Core Tool
- 1/4" Torx Bit T10
- 1/4" Deep Socket 11mm
- 1/4" Deep Socket 12mm
- TPMS Grommet Tool



Spare Parts:

- 80080100 - Torque Screwdriver 0.1 - 3.0Nm
- 80080200 - Torque Screwdriver 2.0 - 10.0Nm
- 69900270 - 3/8" sq dr T-Bar Handle (For 80080200)
- 69900970 - 1/4" Valve Core Tool
- 69901070 - 1/4" Torx Bit T10
- 69901570 - 1/4" Deep Socket 11mm
- 69901670 - 1/4" Deep Socket 12mm
- 69901370 - TPMS Grommet Tool

TPMS Comprehensive + Torque Tool Kit

80083000

- Set of tools for the correct application of critical torque settings when working with TPMS systems on modern vehicles
- Contains all the appropriate tools for servicing and replacing TPMS Valve Cores and TPMS Valve Nuts
- Supplied in foam - Ideal for tool box drawer

Contents:

- Torque Screwdriver 0.1 - 3.0Nm
- Torque Screwdriver 2.0 - 10.0Nm
- 3/8" sq dr T-Bar Handle - for 80080200
- 1/4" Valve Core Tool
- 1/4" Torx Bit T10
- 1/4" Torx Bit T20
- 1/4" Deep Socket 11mm
- 1/4" Deep Socket 12mm
- TPMS Grommet Tool
- 1/4" one way ratchet for loosening valve stem
- T-Handle Allen Key



Spare Parts:

- 80080100 - Torque Screwdriver 0.1 - 3.0Nm
- 80080200 - Torque Screwdriver 2.0 - 10.0Nm
- 69900270 - 3/8" sq dr T-Bar Handle (For 80080200)
- 69900970 - 1/4" Valve Core Tool
- 69901070 - 1/4" Torx Bit T10
- 69902070 - 1/4" Torx Bit T20
- 69901570 - 1/4" Deep Socket 11mm
- 69901670 - 1/4" Deep Socket 12mm
- 69901370 - TPMS Grommet Tool
- 69902570 - One way ratchet
- 66060870 - T-Handle Allen Key

EPB Service & Reset Tool

30662000

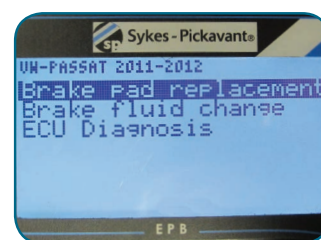
- An All-Makes Service Tool for electronically controlled Brake Service functions
- Functions include:
 - EPB: Brake Pad Replacement
 - CAL: Brake Pad Calibration
 - Reset: Brake Service Reset
 - Fluid Purge: ECU controlled brake fluid change
- Make & Model search facility
- Read & Clear EPB Error Codes
- Graphic Screen images
- Annual Update available for new models
- Range coverage includes:
 - 25 vehicle manufacturers and over 140 individual models



Applications Range

Make	Function(s)
Audi	EPB / CAL / Fluid Purge
BMW	EPB / Reset
Buick	EPB / CAL
Chrysler	Fluid Purge
Citroën	EPB / CAL / Fluid Purge
Chevrolet	EPB / CAL
Dacia	Fluid Purge
Dodge	Fluid Purge
Fiat	Fluid Purge
Ford	EPB / CAL / Fluid Purge
GM	EPB / CAL / Fluid Purge
Hyundai	Fluid Purge
Jeep	Fluid Purge
Kia	Fluid Purge

Make	Function(s)
Lancia	EPB / CAL
Land Rover	EPB / Fluid Purge
Mercedes	EPB / Fluid Purge
Nissan	Fluid Purge
Opel	EPB / CAL / Fluid Purge
Peugeot	EPB / CAL / Fluid Purge
Renault	EPB / Fluid Purge
Seat	EPB
SMART	Fluid Purge
Toyota	EPB / Fluid Purge
Vauxhall	EPB / CAL / Fluid Purge
VW	EPB / CAL / Fluid Purge
Volvo	EPB



Screen example of a new VW Passat

 Full application details by model, available at: www.sykes-pickavant.com

BluBox - EOBD Advanced Data Recorder

30670100

- BluBox is an advanced and fully-configurable automotive EOBD Data Recorder and is an invaluable tool for assisting in the diagnosis of intermittent faults, engine management and economic driving parameters

BluBox can be set-up to record a variety of functions:

- Vehicle Management
- Eco Drive
- Intermittent Fault Analysis
- LPG / Natural Gas

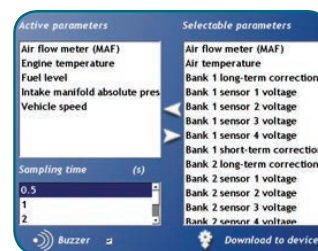
BluBox can monitor and record up to 8 parameters simultaneously - extensive range of selectable parameters available

- Expanded vehicle database coverage for greater trouble code explanation
- Engine Management fault code information
- Find faults immediately in playback mode
- Vehicle specific data recording feature - for data recall and trouble code guidance
- Store results by individual model or vehicle
- Suitable for PC communication with Windows: Vista, XP, 7 Professional & Internet Explorer 7 onwards

Note: Not compatible with Windows 7 Home Edition



Scan the QR code to watch a video overview of BluBox

 Other videos demonstrating the functions of BluBox can be viewed on our website: www.sykes-pickavant.com


BluBox Parameters

Combined Gas Analyser & Diesel Smoke Meter - MOT / VOSA approved SP9500MOT



- UK Designed & Manufactured

Ease of Use:

- Large 19" screen technology, with easy to use prompt screens allowing for fast testing
- Laser A4 printer with automatic print of test results

Latest Technology:

- Latest solid state infra red bench technology
- Remote control for ease of operation
- Automatic RPM selection allows fast ignition recognition
- Anti-flooding device on EGA to protect internal components
- Unique shut-off valve on DSM allows for on-vehicle purging and zeroing – saving time
- 3mtr smoke sample hose allows for easy access without constant relocation

Back-Up:

- Full 'On Site' Service, Calibration & Support Service
- Technical Helpline Service Available



Exhaust Gas Petrol Emissions Tester SP9400MOT



- MOT / VOSA approved petrol emissions tester
- All features as per SP9500MOT above but for testing petrol vehicles only
- As per image above (Excluding SP6502MOT - Diesel Smoke Meter)

Optional Extra:

- SP6502ADD - Diesel Smoke Meter

Diesel Smoke Meter SP6502MOT



- Stand alone diesel smoke meter to MOT / VOSA approved
- Shown in image above (on side shelf)

Diesel Exhaust Gas Analyser - 5 Gas SP9550



SCAN THE QR CODE TO
WATCH A VIDEO OF THE
DIESEL EXHAUST 5 GAS
ANALYSER

The Sykes-Pickavant SP9550 is an OIML Class 1 - 5 Gas analyser matched with a unique, patented probe system, enabling diesel exhaust gases to pass through and be analysed, for the very first time.

- Diagnose Diesel Engine Faults
- Test for Harmful Gases from Diesels
- Environmental Air Quality Testing

Features & Benefits:

- Tests Diesel gases for Diagnostic and Environmental purposes
- Unique patented technology for removal of particulates
- Measures 5 gases, inc Nox
- Can also be used to measure Petrol gas emissions (optional)
- Suitable for testing on all types of Diesel systems - Cars - LCV - HGV - PSV - Plant etc
- Technical manual and diagnostic tips included

N.B. The gas analyser can be used in either Diesel or Petrol mode - simply attach the appropriate probe and select the relevant software



Spares & Service:

- Annual Service & Calibration contract
- SP9550-401 - Replacement Carbon Filter
- SP9558 - Replacement Probe Filters (6 Pack) (for particulate removal)
- SP9550-60K - Replacement Sample Filters (2 Pack)

Accessories:

- SP9552 - Petrol Gas Emissions Probe
- SP9553 - RPM Pick-Up Probe
- SP9554 - RPM Diesel Adaptor
- SP9555 - PC Data Logging and Printing Software
- SP9556 - Serial Port (RS232) to USB Adaptor
- SP9557 - Oil Temperature Probe

Note:

- SP9553 RPM Pick-Up probe is suitable for both Petrol and Diesel applications.
- For Diesel RPM Pick-Up it is necessary to use BOTH SP9553 and SP9554.
- SP9555 PC Kit includes PC software & PC connecting cable for Serial connections only.
- If the PC has only USB ports, it will be necessary to use SP9556 USB adaptor.

4 & 5 Gas Analysers

A range of truly portable 4 & 5 Gas Analysers for fault diagnosis, tuning and pre-MOT testing

Features common to all models:

- Easy to use - no need for daily reconfiguration
- Ideal for both static and dynamic testing
- Light weight - only 1.1kg - truly 'hand-held'
- Fast warm-up - only 150 seconds
- Internal memory - stores up to 250 test results manual or automatic mode
- PC compatible (using optional software)
- Long life internal battery - up to 8 hours between recharges - via mains or 12v (dependent on use)
- Multi-lingual - English, French, German, Italian, Spanish as standard
- 4 Gas models will measure CO, HC, CO₂, O₂
- 5 Gas models will measure CO, HC, CO₂, O₂, NO_x
- Infra-Red Gas Bench measures the three IR gases (CO, HC, CO₂)
- O₂ & NO_x are measured using electrochemical sensors
- Test results can be recorded either manually (by pressing the appropriate key), or automatically at timed intervals ideal for on the road tests so that no driver intervention is required during the test
- Provides Lambda / AFR measurement, and corrected CO
- OIML Class 1 models include RPM and Oil Temperature measurement



*32424000 shown



*32520000 shown

Model Selection Table

	OIML Class 1 Models		Standard Models (New for 2014)	
	32424200 5 Gas Analyser	32424000 4 Gas Analyser	32523200 5 Gas Analyser	32520000 4 Gas Analyser
Gases Measured	CO/CO ₂ /O ₂ /HC/NO _x	CO/CO ₂ /O ₂ /HC	CO/CO ₂ /O ₂ /HC/NO _x	CO/CO ₂ /O ₂ /HC
OIML Class 1 Certificate	✓	✓	Class 1 Accuracy	Class 1 Accuracy
Corrected CO	✓	✓	✓	✓
Measures RPM 2/4 stroke, DIS	✓	✓		
Measures Oil Temperature	✓	✓		
Fuel Types: Petrol / LPG / CNG	✓	✓	✓	✓
Exhaust Probe - Standard		✓		✓
Exhaust Probe - Stainless Steel	✓		✓	
Carrying Case	✓	✓	✓	✓

Hand Held Exhaust Gas Analyser Accessories

Infra-Red Printer 32425000

- Compatible with the full range of Hand Held Gas Analysers
- The Gas Analyser sends results via an integral IR transmitter to the remote printer



High Temp Exhaust Probe - Stainless Steel 32427000

- For use during extended tests, or with high temperature exhausts
- Supplied as standard with 5 Gas models



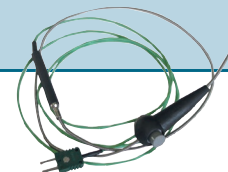
RPM Clamp 32428000

- For direct RPM measurement
- Supplied as standard with OIML Class 1 models



Oil Temperature Probe 32429000

- For direct oil temp measurement
- Supplied as standard with OIML Class 1 models



Spare Parts:

- 32420100 - Water Trap End Cap
- 32420200 - Water Trap & Filter
- 32420400 - Battery Charger & Mains Power Lead
- 32420600 - Standard Exhaust Probe & Hose
- 32421600 - O-Ring Kit (for x3 Water Traps)
- 32420800 - Spare Filter Set (x10)
- 32421500 - Internal Battery
- 32421700 - O₂ (Oxygen) Sensor

Automotive Digital Multimeter 30050000

- Full control manual range selection
- AC/DC Voltage measurement up to 600 Volt
- Resistance measurement up to 2 MOhm
- Overload protection & Auto Power-off
- Low battery indicator
- Dwell measurement from 0 to 120°
- Temperature measurement from -40°C to 1000°C
- Tachometer function measures from 500 to 10000 rpm
- Supplied with test leads, croc clips, instructions & 9 volt battery
- Large 3 1/2 digit LCD display
- DC Current measurement up to 10 A
- Diode & Continuity Tests
- Automatic Zeroing
- Soft holster for instrument protection
- Data hold facility for 'freezing' of readings



Dual Display Autoranging Automotive Digital Multimeter 30053500

- Fully autoranging, primary and secondary display, bargraph, overload protection and auto power-off
- Large selectable 4 3/4 or 3 3/4 digit main display - 4 digits secondary display
- 42 segments analog bargraph
- Voltage measurement: DC 0-1000 volt & AC 0-750 volt
- AC/DC current measurement up to 10 A
- Tachometer function with inductive pickup measures from 30-20000 rpm
- Dwell measurement in degrees from 0- 360° or duty cycle from 0 - 100%
- Temperature measurement from -20°C to 1000°C or 0° to 1832°F (selectable °C or °F)
- Fuel Injection test measures pulse width from 0.05 to 250 mS, or duty cycle from 0 to 100%
- Resistance measurement up to 40 MOhm
- Frequency measurement from 10 to 20 KHz
- Oxygen Sensor test function
- Alternator test function
- Fault Code Reader & DTC Decoder
- Diode & Continuity Tests
- Overload Protection & Auto Power-off
- Backlight
- Automatic Zeroing
- Low battery indicator
- Temperature probe: Bead type K thermocouple
- Inductive pickup for tachometer function
- Supplied with test leads etc



100 Amp AC/DC Micro Current Clamp Meter 30040000

- Automotive & Industrial 0.001A-100A Micro Current Digital Clamp Meter
- Specially designed for measuring very low current, to accuracy of 0.001 of an Amp
- Small Jaw: 300mm (W) x 13.4mm (D)
- Clamp opens up to 12.5mm
- One rotary switch operation
- Large 4 digit LCD display
- AC/DC voltage measurement up to 600 Volt
- AC/DC current measurement from 0.001 up to 100 A
- Relative measurement
- One touch auto zero
- Peak Hold & Data Hold Function
- Resistance measurement
- 2 readings per second sampling
- Continuity check with audible indicator
- Protective hand guard
- Low battery indicator
- Auto power off
- 50 hrs in use battery life
- Soft carrying deluxe pouch
- Test leads and batteries included



1000 Amp AC/DC Current Clamp Meter 30041000

- Automotive & Industrial 1000 Amp AC/DC Digital Current Clamp Meter
- AC/DC voltage measurement up to 1000 volt
- AC/DC current measurement up to 1000 amps
- Clamp opens up to 25.4mm
- One rotary switch operation
- Large 4 digit LCD display
- One touch auto zero
- Peak Hold Function
- Data Hold Function
- Continuity check with audible indicator
- Resistance measurement
- 2 readings per second sampling
- Protective hand guard
- Low battery indicator
- Auto power off
- 50 hrs in use battery life
- Soft carrying deluxe pouch
- Test leads and batteries included



Professional Circuit Tester

01490000

- 6 / 12 / 24 volts
- Robust handle with hardened steel probe
- 1.5m heavy duty insulated rubber lead
- Uses standard automotive bulb to indicate continuity



Inteliprobe

30042600

- Circuit & Continuity Tester
- Ideal for locating bad earths, breaks in continuity, and short circuits
- Intelligent Auto Probe for testing:
 - Energize Components
 - Polarity test
 - Continuity test
- Short Circuit Protection



Professional Cordless Circuit Tester

30042400

- Suitable for testing DC circuits from 3v to 28v
- No ground wire or clips required
- Unique V-groove needle accessory for wire piercing
- Three-way voltage indication - Illuminates LED, buzzes and vibrates on contact with live wire
- Solid state lamp for longer lasting performance
- Safe to use on Engine Management systems - e.g. ECM's, Sensors, Transducers etc
- Supplied with long-life alkaline batteries



Automotive Relay Tester

30076500

- Quickly and accurately test electro-mechanical relays used on most cars - both 4 & 5 pin relays - automatically
- Applies a signal to the relay coil and checks for consistent functioning of contacts
- Unit automatically indicates test results with a series of red & green performance lights
- 12V Supply required



EGR Valve Activator

30077500 - UK Version

300775EU - EU Version

- For testing & cleaning valve as part of routine servicing - no need to remove valve from vehicle for use
- Prevents the unnecessary replacement of EGR Valves
- Actuates EGR Valves in a fixed open position for cleaning, and in an open / closed sequence for freeing carbon deposits
- Choice of two test cycles: At the end of either test cycle the tool gives an audible indication when a faulty and unserviceable EGR valve is connected
- Supplied with x3 connectors for different makes of valves
- Power Supply: 220 - 240V mains
- Open / Close Time Cycle: 90 sec
- Includes applications list - visit www.sykes-pickavant.com for details



Scan the QR code to watch a video of the EGR Valve Activator



Sykes-Pickavant Battery & Electrical Systems Tester MDX390SP

- High Performance model for batteries rated from 100 – 1200 CCA
- Tests battery using conductance technology without harmful load testing
- Suitable for luxury and 4x4 vehicles with higher level electronic systems
- Determines the state of a Battery and Electrical System
- Simple & Accurate Tests - without heat or sparks being created
- Integrated printer for immediate review with customer
- Supplied in foam in protective black case

Features:

- Ability to add garage name to printout header
- Suitable for batteries from 100 CCA to 1200 CCA
- Suitable for all battery types inc AGM & GEL

Available Tests:

- 12v batteries & electrical systems
- Starting & Charging system voltage
- Bad Cell detection
- Test discharged batteries down to 1 volt

AGM & GEL Battery Testing	✓
Battery Diagnosis SOH (State of Health)	✓
Temperature Compensation	✓
Starting and Alternator Test	✓
Servo Technology	✓
Voltmeter Mode (0.9 – 16V)	✓
Surface Charge Removal Procedure	✓
Workshop Address on Printout	✓



Accusmart Battery Chargers

Extend your batteries' lifetime with Accu-Smart® - A totally automatic charger that works for you. Accu-Smart®, electronic "switched-mode" battery charger, offers greater power compared to old chargers using "linear-mode technology" with transformers.

- Suitable for Wet (Lead Acid), AGM, Gel & Fleece type batteries
- No need for handling or mode selection, the charger works automatically, without external intervention
- Accu-Smart® disposes of a regulator which allows the totally secure charging of the battery
- Once connected, the Accu-Smart® manages and regulates the charge of the battery, so the charger can be left connected on the battery permanently
- The Accu-Smart® charger restarts in case of a power cut and provides total protection against:
 - Short-circuits
 - Peaks of voltage (AC or DC)
 - Inversion of polarity
 - Over-heating
 - Spikes
- Each charger is perfectly safe for the electronics of a vehicle, therefore it is not necessary to disconnect the battery from the vehicle before charging it. The charger can effectively retain memory settings within a vehicle while replacing a battery



Part No.	Rating
845122SP	12 volts / 2 Amps
845124SP	12 volts / 4 Amps

Inter-Changeable Accessories:

Each Accu-Smart® charger includes interchangeable accessories allowing an easier connection

A selection of end-fittings allows the user to plug the connector that best suits the application:

- Eyelets: Connect on the battery terminals when they are difficult to reach. Ideal for a long-term connection
- Cigarette-Lighter Plug: Recharge the vehicle's battery through the 12V outlet
- Crocodile Clamps: For a universal connection



Eyelets



Cigarette Lighter Plug



Crocodile Clamps

Battery Booster Pack

A complete range of high quality Battery Booster Packs, covering a wide variety of applications including Automotive, Agriculture, Plant, HGV, Marine & Aviation

Features:

- AGM internal batteries deliver high amperage instantaneously (2 year warranty)
- Double insulated starting cables – 1.30 / 1.35 mtrs length
- Illuminated voltmeter indicates booster charge level, booster & alternator function
- Internal fuse protects against short circuits
- Curved jaw clamps, fully insulated – blue clamp with LED lamp for safe use in the dark*
- Single-piece, moulded case – shock resistant (lifetime warranty on case)



Pro-Start Booster Pack - Available Models / Specifications:

Technical	Pro-Start 440 861044SP	Pro-Start 700 861001SP	Pro-Start 800 861002SP	Pro-Start Plus 1400 761001SP	Pro-Start Plus 1600 761006SP	Pro-Start Plus 2400 760008SP
Voltage	12v	12v	12v	12/24v	12/24v	12/24v
Cranking Amps	440	700	800	1400/700	1600/800	2400/1200
Peak Amps	1170	1860	2370	3720/1860	4740/2370	6200/3100

*Excludes 861044SP

Spare Parts:

- 862005 - 300amp Spare Fuse for 861044SP, 861001SP & 861002SP
- 862006 - 500amp Spare Fuse for 761001SP, 761006SP & 760008SP

PROPULSTATION Booster Pack complete with Docking Station

PROPULSTATION eliminates the risk and frustration of an uncharged booster pack due to the unique docking station. This means that it is always in the right place, always charged 100% and has 3 times longer lifetime.

- AGM internal batteries deliver high amperage instantaneously (2 year warranty)
- Robust shell case design with 5mm shatterproof polyethylene
- Long and flexible cables with a double insulation, they have a cross-section capable of delivering the battery's full power
- Robust, wide-opening clamps which are fully insulated and have a copper trace carrying the current to both of the bronze jaws



Choose from:

- **AC model:**
Supplied with mains AC charger for workshop / showroom use
- **DC model:**
Supplied with 5m cable and one-way diode for vehicle use

PROPULSTATION Booster Pack - Available Models / Specifications:

Technical	521001AC	521001DC	521002AC	521002DC	520006AC	520006DC	520008AC	520008DC
Voltage	12v AC	12v DC	12v AC	12v DC	12/24v AC	12/24v DC	12/24v AC	12/24v DC
Cranking Amps	700	700	800	800	1600/800	1600/800	2400/1200	2400/1200
Peak Amps	1860	1860	2370	2370	4740/2370	4740/2370	6200/3100	6200/3100

Spare Parts:

- 862005 - 300amp Spare Fuse for 521001AC/DC & 521002AC/DC
- 862006 - 500amp Spare Fuse for 520006AC/DC & 520008AC/DC

PROPULSTATION Docking Station

- DC Model - One way diode to connect to the vehicle's battery
- AC Model - Provided with an automatic electronic 12v charger to be connected to the mains

Technical	5200AC12	5200DC12	52AC1224	52DC1224
Model Supported	521001AC / 521002AC	521001DC / 521002DC	520006AC / 520008AC	520006DC / 520008DC



Professional Data Saver - EOBD

30077000 - UK Version 300770EU - EU Version

- A professional solution for saving vehicle data via the EOBD socket
- Saves the on-board computer memory while the vehicle battery is disconnected
 - Diagnostics memory, anti-theft settings, radio presets, electric mirror and comfort settings etc
- EOBD cable for fast connection to the vehicle
 - Cigarette lighter adaptor for non-EOBD and older vehicles
- High capacity, rechargeable, internal 12v sealed lead-acid battery allows for extended use between re-charges – no separate vehicle battery required
 - State of charge indicator identifies when Data Saver needs recharging
- Safety cut-out fuse to protect against excessive current draw



Automotive Refractometer

03201000

- Tests Coolant, Battery Acid, Screenwash and AdBlue using an optical prism test technique
- Includes NEW internal Light feature for ease of use in poor light
- Coolant - Tests both propylene and ethylene based anti-freeze coolant solutions and determines the freezing point
- Battery Acid - indicates the specific gravity of the battery electrolyte
- Screen Wash - shows the freezing point of screenwash fluids in degrees C
- AdBlue – Indicates % concentration of AdBlue additive

Specifications:

Coolant: 0 to -50°C Battery: 1.1 to 1.4kg / ltr
 Windscreen: 0 to -40°C AdBlue: 30 – 35%



Antifreeze & Coolant Hydrometer - Ethylene Glycol

03200000

- Measures the volume percentage of Ethylene Glycol contained in the cooling system
- Temperature range: -5°C to -40°C



Antifreeze & Coolant Hydrometer - Polypropylene Glycol

03200200

- Measures the volume percentage of Polypropylene Glycol contained in the cooling system
- Temperature range: -5°C to -40°C



Battery Acid Hydrometer

03200500

- Professional tester for measuring the state of charge in lead acid batteries
- Measures specific gravity and indicates battery condition with a red / green scale



Wireless Electronic Stethoscope Kit - "ChassisEAR"

30047500

The Wireless Electronic Stethoscope is designed for the detection of vehicle noises e.g. rattles, squeaks and air ingress under load, during a road test and for the diagnosis of a wide variety of potential faults e.g. wheel bearings, CV joints, differentials, transmission, injectors, alternators, water pumps, AC compressors and many more.

- Can be used on cars, vans, trucks, buses etc as there are no cable length issues to overcome
- Consists of Receiver Unit, 4 x Transmitter Units (4 channels), 4 pick-up leads, pick-up fixing straps, headphones, batteries, instruction manual & storage case.
- Pick-up clamps can be attached to many different parts of the vehicle in order to amplify the sounds made under load and in actual driving conditions.

N.B. Due care and consideration should be taken of driving conditions and regulations when operating the ChassisEAR™ on the road.



Scan the QR code to watch a video of the Wireless Electronic Stethoscope Kit



Spare Parts:

- 30047501 - Transmitter 1
- 30047502 - Transmitter 2
- 30047506 - Pick-Up Lead and Clamps (Set of 4)
- 30047503 - Transmitter 3
- 30047504 - Transmitter 4

Sonoscope

32370000

- Super sensitive sound detector, with a built-in diaphragm which amplifies noise, for assisting in the diagnostic process
- Robust metal and plastic construction, with 550mm hose and 290mm probe
- Helps to diagnose many vehicle problems, including:
 - Noisy water pumps
 - Faulty wheel bearings
 - Alternator and power steering problems
 - Air conditioning compressor bearings
 - Camshaft and crankshaft knocks
 - Noisy tappets etc



Dual Laser Infra-Red Thermometer

30044000

- High precision non-contact thermometer
- Dual Laser beams are targeted on a single spot – ensures optimum distance from object for accurate temperature measurement
- Temperature range: -50° to 550°C
- Accuracy: +/- 1.5% at 550°C
- Features:
 - Backlit LCD display
 - MAX temperature display
 - Automatic data hold & display resolution
 - High & Low temp alarm setting
- Ideal for Aircon, Cylinder temp, Brake temp, Cooling System, Exhaust Cat etc



Brake Fluid Tester

33540000

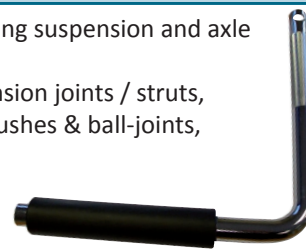
- A quick and clear condition tester for brake fluid
- Shows water content in a series of LED indicators
- Quick change selection for DOT3, 4 or 5.1 fluid testing
- Uses 2 x AAA batteries (supplied)



Suspension Wear Indicator

08085000

- An innovative tool for detecting suspension and axle joint wear
 - For detecting faults in suspension joints / struts, wheel bearings, stabilizers, bushes & ball-joints, steering gear & links
- See page 16 for further details



NEW TPMS TOOL!

NOW CLONE CAPABLE FOR EZ SENSOR & SENS-IT



NEW MODEL
CLONE CAPABLE FOR EZ SENSOR & SENS-IT

SEE PAGE 62

